



Dnyanvardhini Trust'
Sonubhau Baswant College
of
Arts & Commerce

Shahapur, Dist. Thane-421601

(Affiliated to University of Mumbai, Mumbai)

ISO 9001:2015 Certified

Re-Accredited with B+ by NAAC

Email: sbcollege123@gmail.com

Website: sbcsahapur.ac.in

Student's Satisfaction Survey

Academic Year
2023-2024

IQAC Meeting Minutes

The meeting

ANALYSIS REPORT OF STUDENTS SATISFACTION SURVEY ON TEACHING-LEARNING AND EVALUATION ACADEMIC YEAR 2023-24

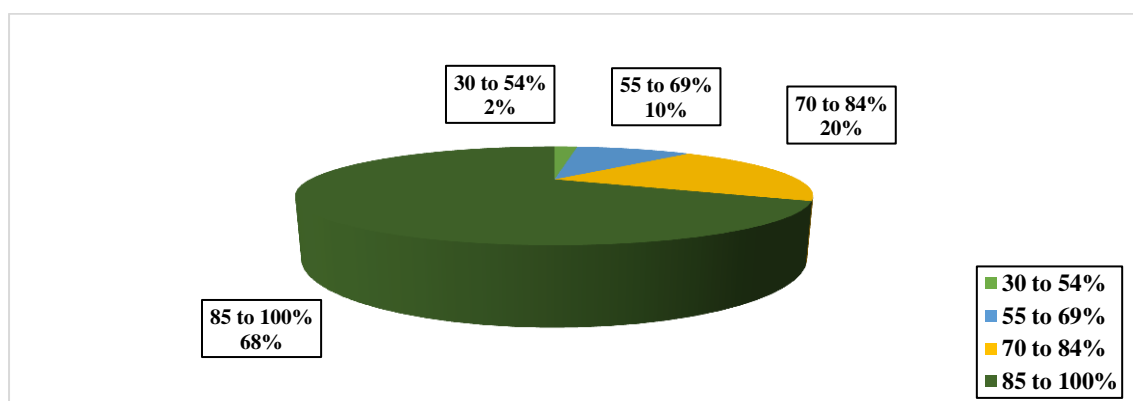
Introduction:

The overall development of the students is a priority for Sonubhau Baswant College of Arts and Commerce, located at Shahapur, Tal. Shahapur, Dist. Thane (MS). The college offers various extracurricular and co-curricular activities to support students' growth. To encourage excellence from the students, the college hosts a variety of learner-oriented activities, including debate, elocution, sports competitions, study excursions, study tours, and seminars. The college views stakeholder engagement, particularly from students, as crucial to implementing meaningful and successful improvements. Their comments demonstrate the actual Caliber of the teaching-learning process, making it easy to pinpoint both the teaching's advantages and potential shortcomings.

Student Satisfaction Survey:

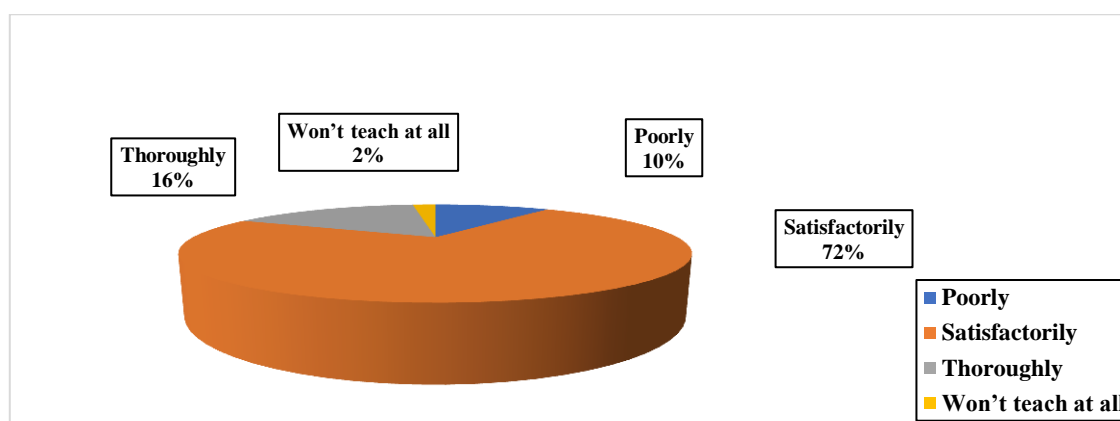
Student Satisfaction Survey (SSS) that results from evaluating students' experience with the facilities and support they received in the college is very important. It is a legitimate and trustworthy technique to determine the main areas for upcoming advancements. Therefore, it makes it possible to comprehend the resources for regions that need more focus. As an outcome, it is a clear and practical indicator of how well the institution's teaching and learning are working. Students are encouraged to participate actively in SSS by the college.

1) The syllabus was covered in the class:



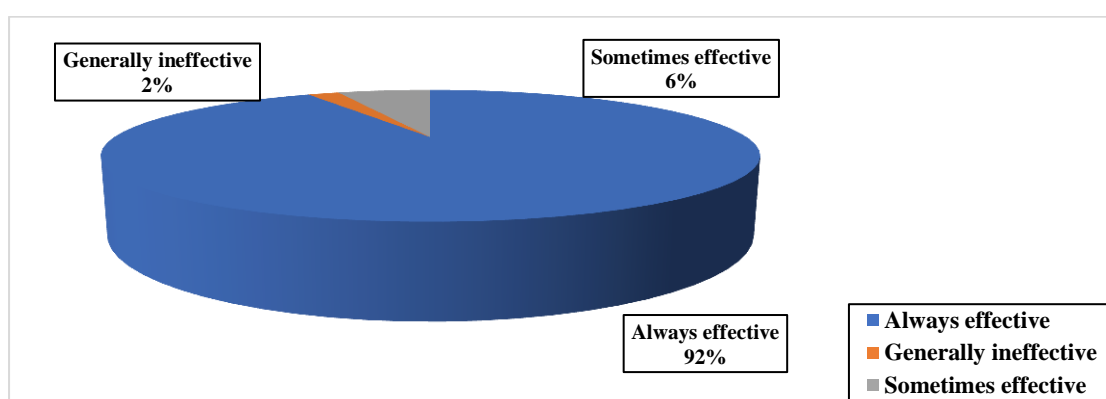
Students' satisfaction survey presented by Pie Chart shows that the majority of students agree that the 70 to 100% syllabus was covered in the class.

2) Teachers prepare for the classes:



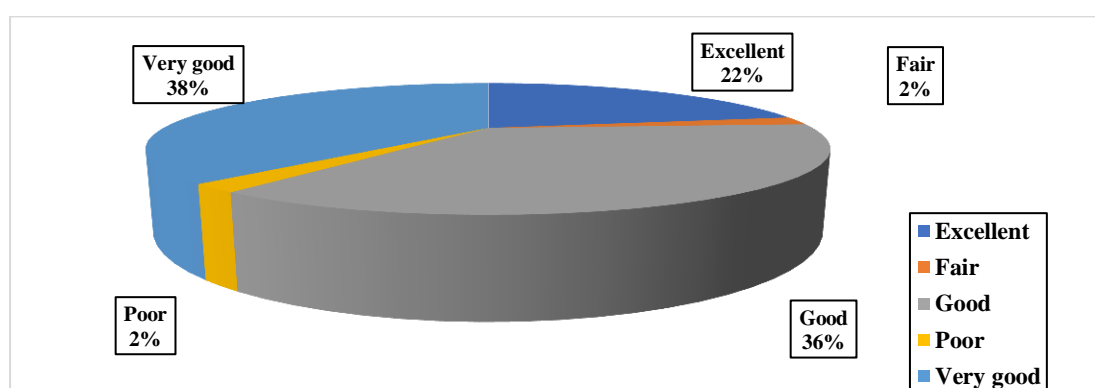
The above Pie Chart shows that all teachers go to class fully prepared to teach their subject. 88 % of students agree that the teachers are fully prepared to teach their subject. The above chart shows that 12% of students do not agree with the above statement.

3) The Teachers can communicate:



The above Pie Chart shows that all the teachers are very well able to communicate with the students. 92 % of students agree that the teachers are very well able to communicate with the students. The above chart shows that 6% of students agree that teachers can communicate sometimes effectively.

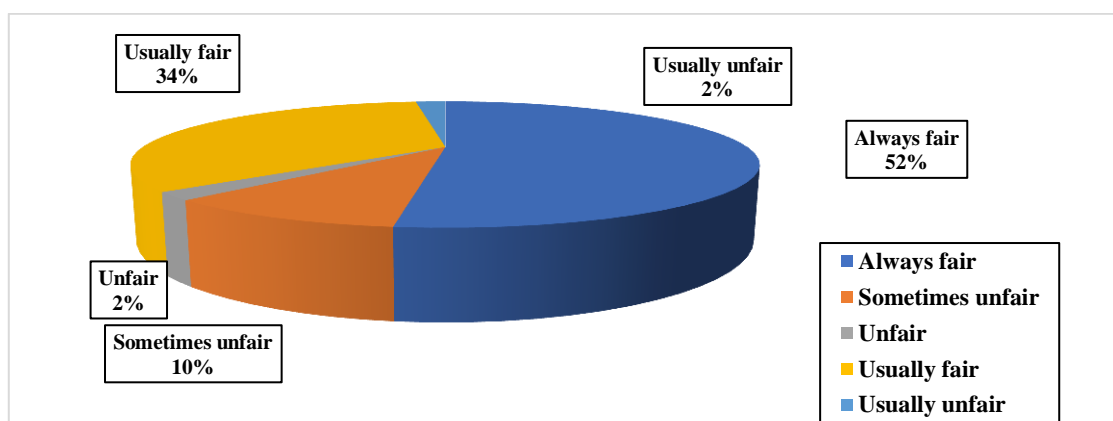
4) Teacher's approach to teaching:



The above Pie Chart shows that the teacher's teaching approach can be described as follows. 22 % of students agree that the teacher's teaching approach is excellent. 38% of students agree that the teacher's

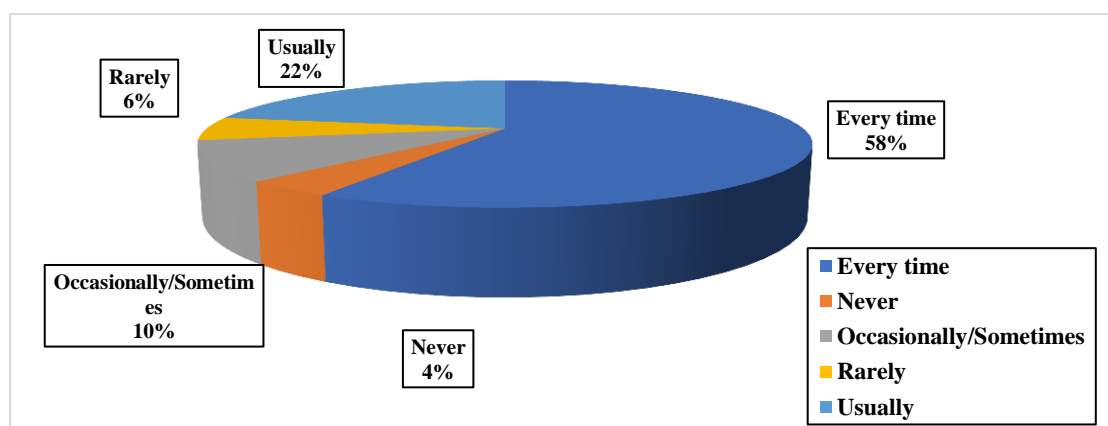
teaching approach is very good. 36 % of students agree that the teacher's teaching approach is good. Overall, we can say that students are satisfied with the teachers' approach to teaching.

5) Fairness of the internal evaluation:



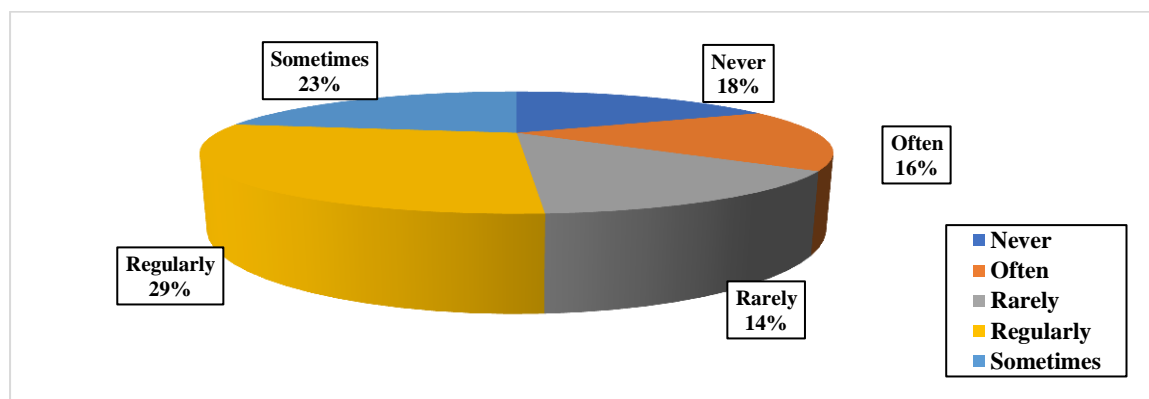
The college takes all kinds of necessary care in the internal evaluation process. Thus, the teachers are always fair in the internal evaluation process. The above Chart shows that the teachers are always fair in the internal evaluation process. According to 52 % of students, the teachers are always fair in the internal evaluation process. 34% of students agree that the teachers are usually fair in the internal evaluation process. 14 % of students do not agree with the above statement that the teachers are fair in the internal evaluation process.

6) Performance in assignments discussed:



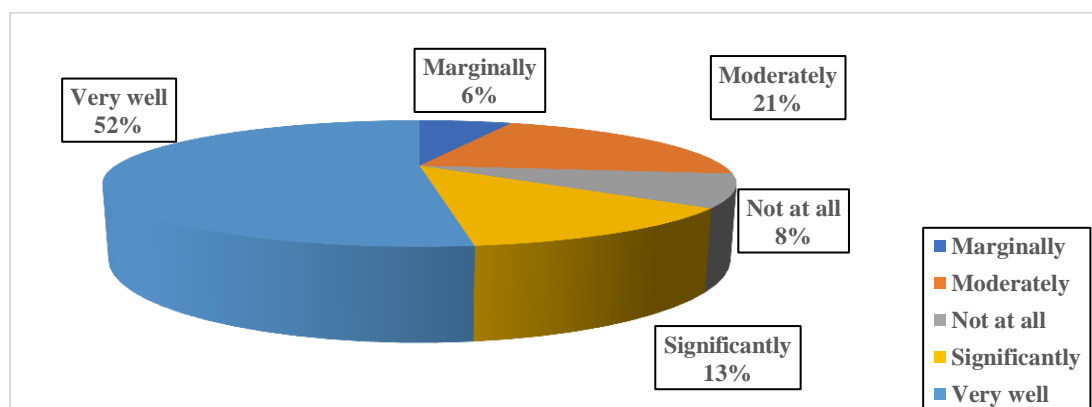
Teachers regularly discuss with the students their performance in assignments, internal assessments, and external assessments. The above Chart shows that the teachers are always discussed with the students about their performance in the assignment. According to 58 % of students, the teachers always discuss with students about their performance in assignments. 22% of students agree that the teachers usually discuss with students about their performance in assignments.

7) Promoting internship, student exchange, and field visit opportunities for students.



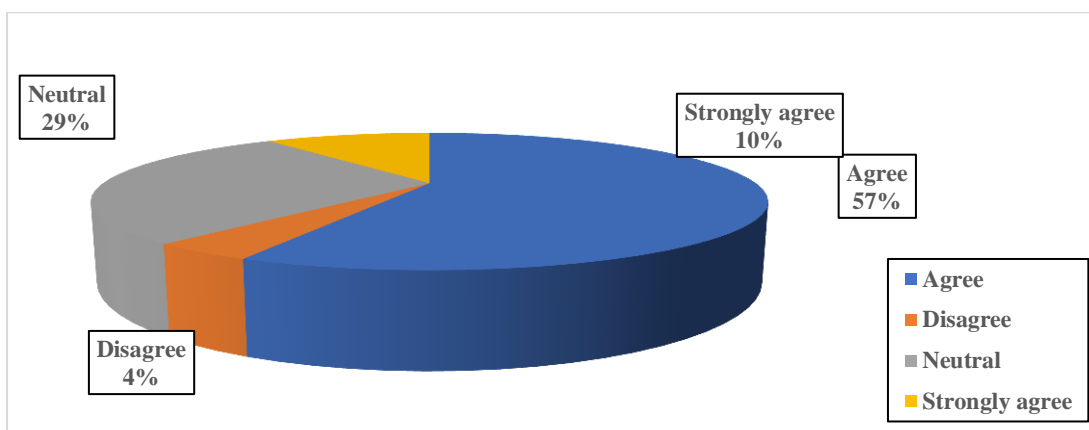
The college always actively promotes internship, student exchange, and field trip opportunities for students for the all-round development of the students. The above Chart shows that the institute takes an active interest in promoting internship, student exchange, and field visit opportunities for students. According to the 29 % of students, the institute takes an active interest in promoting internship, student exchange, and field visit opportunities for students. 23% of students agree that the institution is sometimes interested in promoting internship, student exchange, and field trip opportunities for students.

8) The teaching and mentoring process:



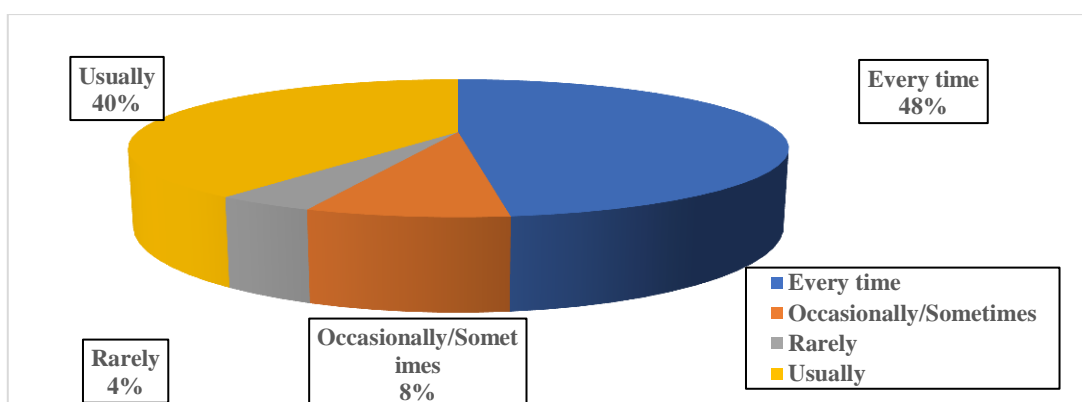
Our institution's teaching and guidance process facilitates the cognitive, social, and emotional growth of students. 52% of students agree that the institution's teaching and guidance process facilitates the cognitive, social, and emotional growth of students very well. 13% of students agree that the institution's teaching and guidance process facilitates the cognitive, social, and emotional growth of students significantly.

9) Multiple opportunities to learn and grow:



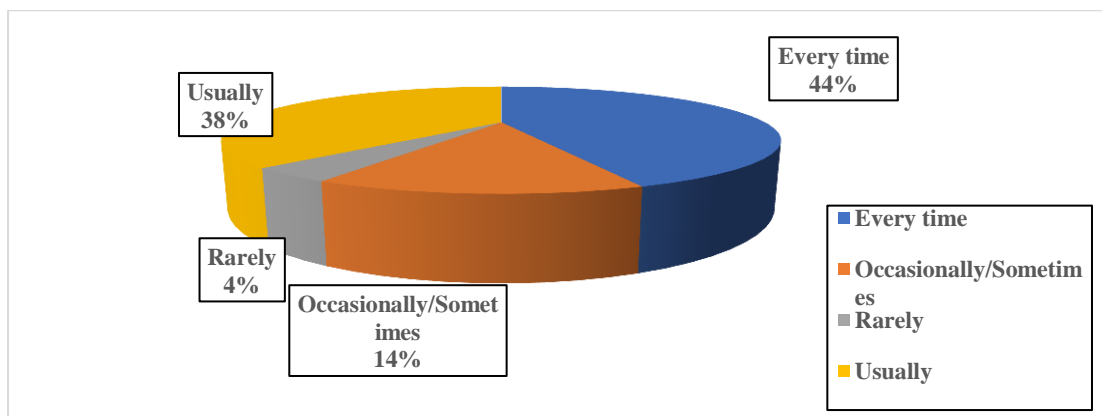
The institution provides multiple opportunities for students to learn and grow. The above pie chart shows that 67% of students agree that the institute provides multiple opportunities for students to learn and grow.

10) Competencies, course outcomes, and program outcomes:



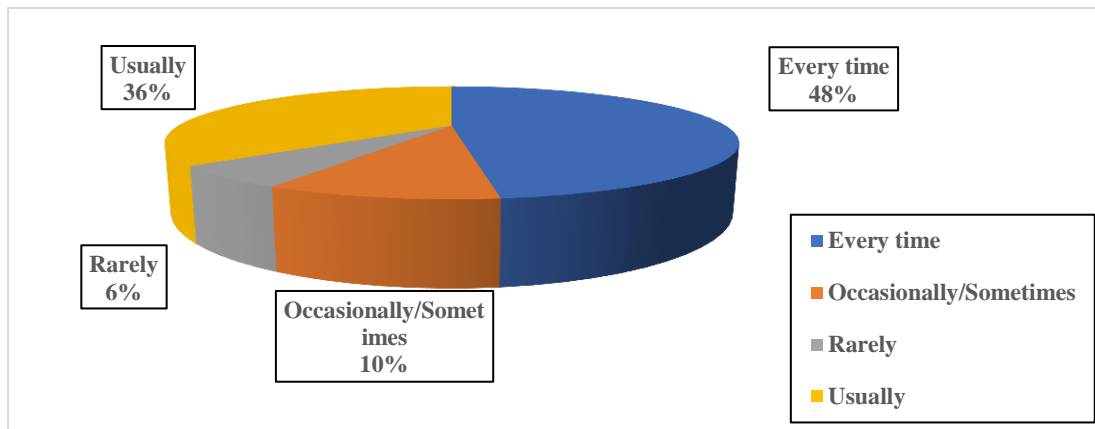
Teachers of our institution regularly inform students about their expected competencies, course outcomes, and program outcomes. The above pie chart shows that 88 % of students agree that the teachers regularly inform students about their expected competencies, course outcomes, and program outcomes.

11) Follow-up with an assigned task:



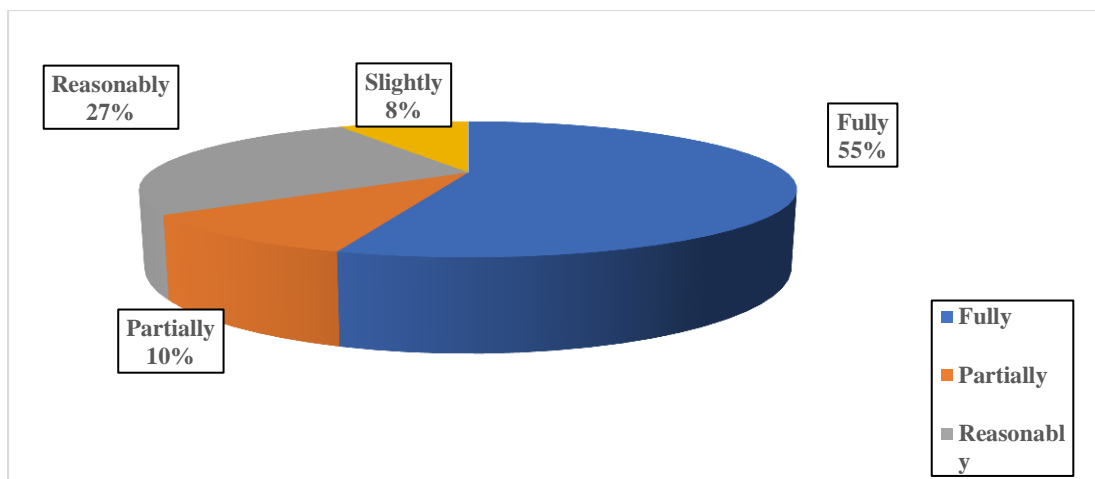
Student mentor does a necessary follow-up with an assigned task to students. According to the pie chart, 44% of students agree that the mentor does a necessary follow-up with an assigned task to students every time. 38 % of students agree that the mentor does a necessary follow-up with an assigned task to students usually.

12) Illustrate the concepts through examples and applications:



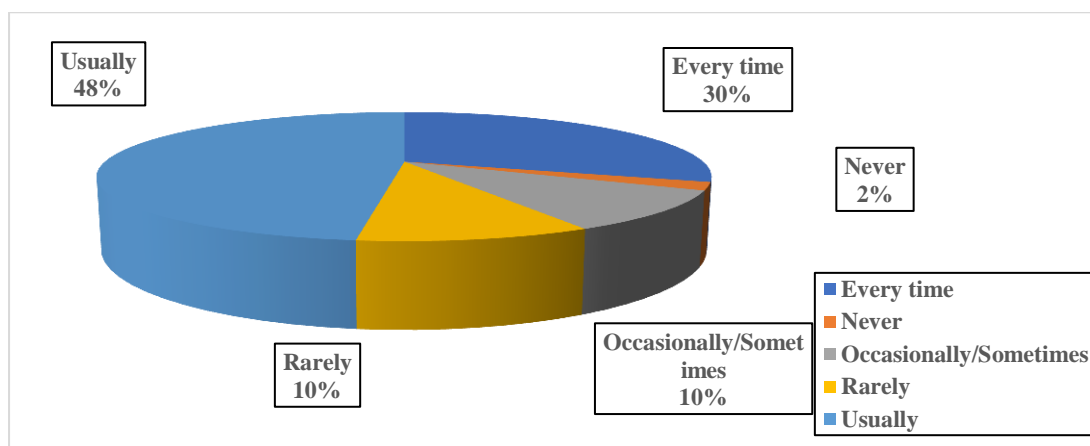
The above pie chart shows that teachers illustrate the concepts through examples and applications. 48% of students agree that the teachers illustrate the concepts through examples and applications every time. 36% of students agree that the teachers illustrate the concepts through examples and applications usually.

13) Providing the right level of challenges:



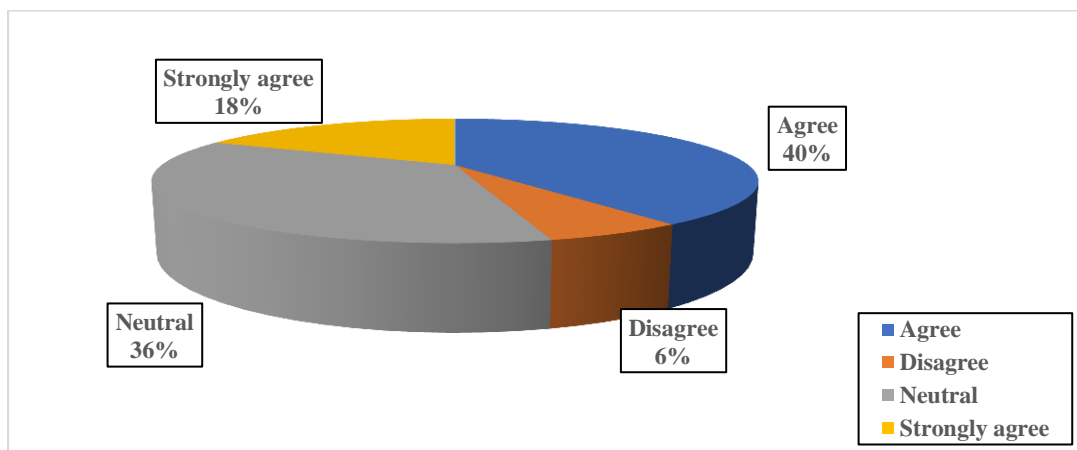
Our teachers recognize the strengths of students and encourage them to take on challenges at different levels. 55% of students say that the teachers recognize the strengths of students and encourage them to take on challenges at different levels.

14) Identifying weaknesses and overcoming them:



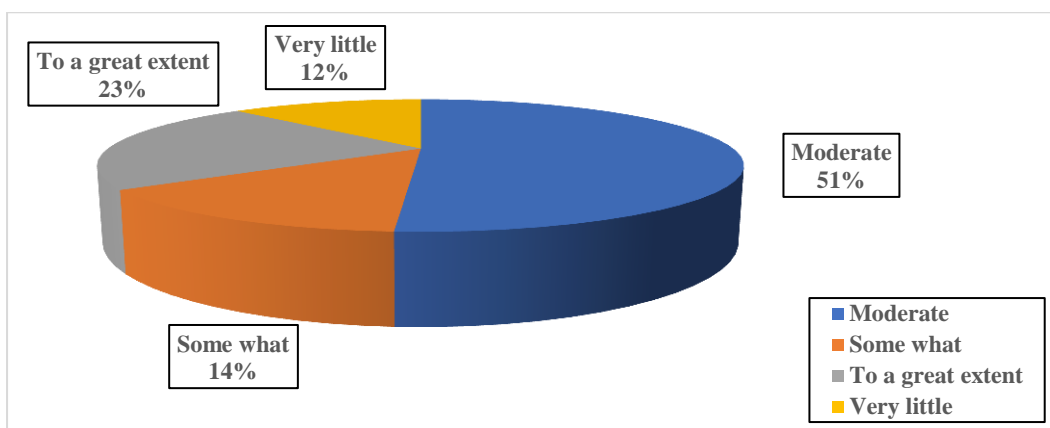
The above pie chart shows that teachers can identify students' weaknesses and help them overcome their weaknesses. 30% of the students agree that the teachers can identify students' weaknesses and help them overcome their weaknesses every time. 48% of the students say that usually the teachers can identify students' weaknesses and help them overcome their weaknesses.

15) Quality improvement of the teaching-learning process:



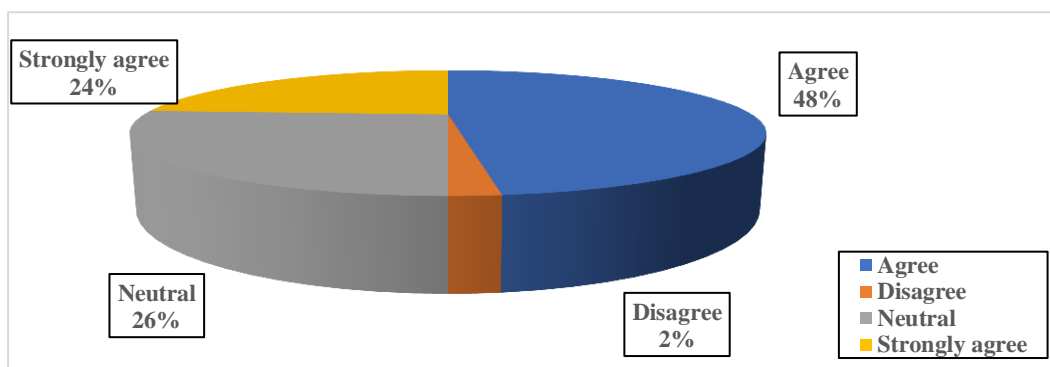
The institution makes an effort to engage students in the monitoring, reviewing, and continuous quality improvement of the teaching-learning process regularly. 58% of the students believe that the institution makes an effort to engage students in the monitoring, reviewing, and continuous quality improvement of the teaching-learning process. 6% of the students do not agree with the above statement. 36% of the students are neutral with the above statement.

16) Problem-solving methodologies for enhancing learning experiences:



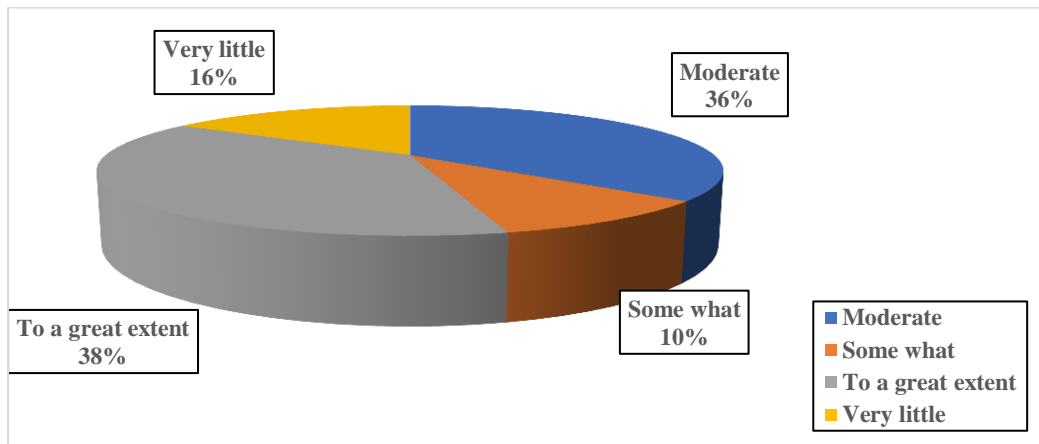
Teachers of our college use student-centric methods, such as experiential learning, participative learning, and problem-solving methodologies to enhance learning experiences. 23% of the students say that the teachers of our college use to a great extent student-centric methods, such as experiential learning, participative learning, and problem-solving methodologies to enhance learning experiences. 51% of the students agree that the teachers of our college use student-centric methods, such as experiential learning, participative learning, and problem-solving methodologies to enhance learning experiences.

17) Teachers encourage Students to participate in extracurricular activities:



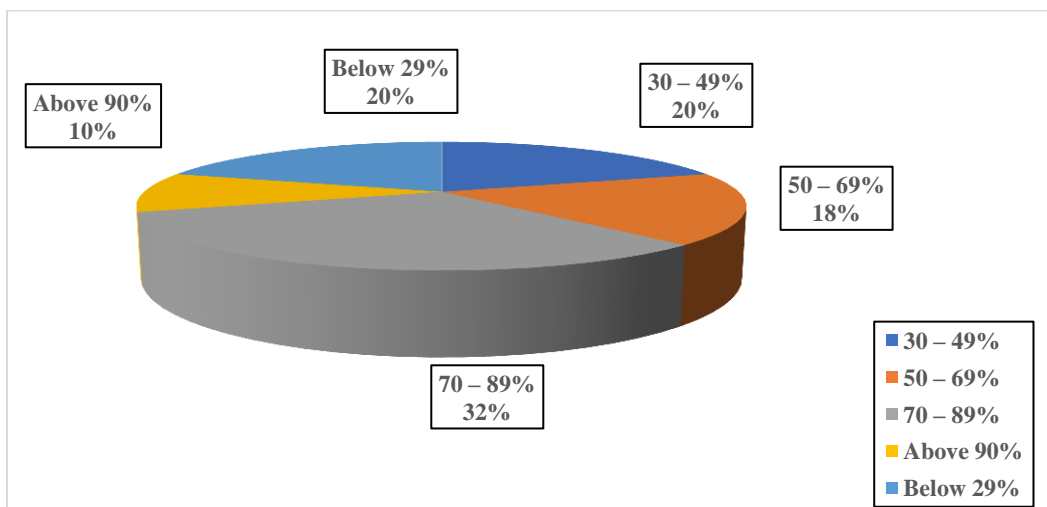
Our college is committed to the all-round development of the students. To ensure the all-round development of the students, the teachers constantly encourage all the students to participate in extracurricular activities. The above pie chart shows that the majority of students agree with the above statement. 72% of the students agree that the teachers encourage students to participate in extracurricular activities. 26% of the students were neutral with the above statement.

18) Efforts are made by the institute/ teachers to inculcate soft skills, life skills, and employability skills:



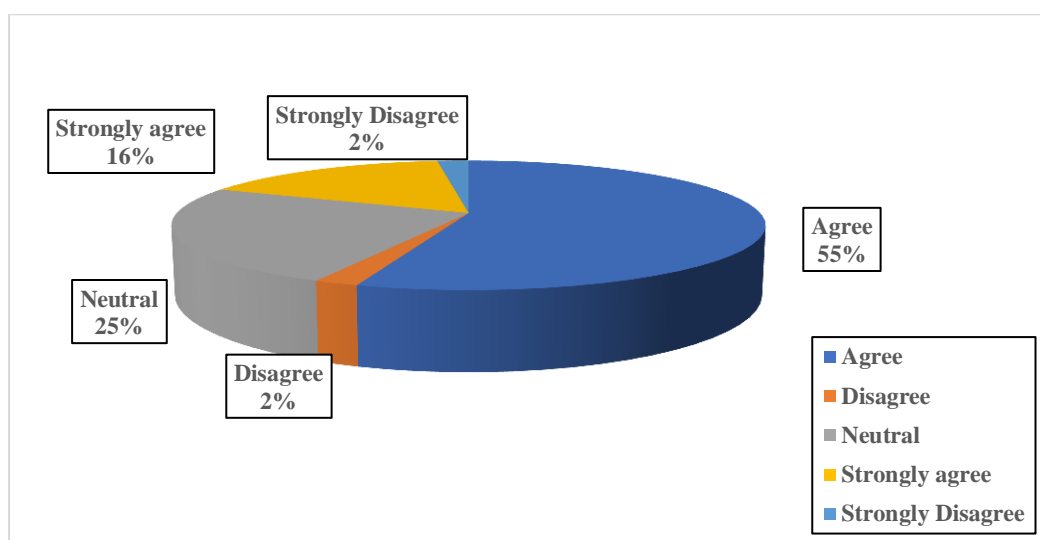
Our teachers and institute regularly make efforts to inculcate soft skills, life skills, and employability skills to make students ready for the world of work. 38% of the students agree that the teachers and institute regularly make efforts to a great extent to inculcate soft skills, life skills, and employability skills to make students ready for the world of work. 36% of the students agree that the teachers and institute regularly make efforts to inculcate soft skills, life skills, and employability skills to make students ready for the world of work.

19) Teachers use ICT tools while teaching:



Every teacher in our college is well aware of modern technology used in teaching-learning methods in the modern era. All the teachers in our institute use ICT tools such as LCD projectors, Multimedia, etc. while teaching. 50% of the students agree that the teachers in our institute use ICT tools such as LCD projectors, Multimedia, etc.

20) Overall quality of teaching-learning process:



Our institution is constantly striving to provide quality education to students. The institute ensures that quality education is continuously pursued to students get quality education. In that sense, the overall quality of the teaching-learning process in our institute is very good. 71% of the students agree that the overall quality of the teaching-learning process in our institute is very good 25% of students were neutral with the above statement.

21) Some observations/suggestions to improve the overall teaching-learning experience in the institution:

- 1) All teachers are excellent and give their 100 percent to students. They help students every time to improve skills or learn new skills! Teachers support all students in any condition in learning and they try to make a brighter future for students...all teaching staff are giving better guidance to all students...and give the best advice all every student.
- 2) All teachers are helping as to learning and all teaching staff giving better and bright advice to every student.
- 3) Using technology in the classroom. ii) Teaching lessons in different formats. iii) Appreciate different learning styles.
